

この図面は当社と外国会社との製作協定にもとづき作成されたものでこの図面を勝手にコピーまたは第三者に示すことは厳禁されております。	STANDARD TOLERANCE SHALL CONFORM TO MSL -JUL '69-	SPEC NO	SPEC NAME	COMMERCIAL TOLERANCE (MACHINING)	
				NOMINAL SIZE	LIMIT
				1 or more Less than 16	± 0.2


PARTICULARS		主 要 目 的	
		SHELL SIDE TUBE SIDE	
		IN	OUT
GOVERNMENT REGULATION	ASME SEC. VIII DIV. 1 TEMA "R" INCL. WINTER ADD. '75		
SURFACE AREA	41.6 m ² /SHELL		
TUBE SIZE	19.05 ^ø x 1.65 ^t x 4377 ^l		
NO. OF TUBES (MAT'L)	145		(B1111-443)
FLUID	HC + VAPOR	WATER	
DESIGN PRESS.	14.1 ^{KG} / _{CM²}	5.3 ^{KG} / _{CM²}	7.0 ^{KG} / _{CM²}
DESIGN TEMP.	93.4 °C	65.6 °C	
HYDROSTATIC TEST PRESS.	21.15 ^{KG} / _{CM²}	7.95 ^{KG} / _{CM²}	8.4 ^{KG} / _{CM²}
PNEUMATIC TEST PRESS.	19.1 ^{KG} / _{CM²}	5.3 ^{KG} / _{CM²}	7.0 ^{KG} / _{CM²}
POST WELD HEAT TREATMENT	NO	YES	
RADIOGRAPH	SPOT	SPOT	
JOINT EFFIC.	85 %	85 %	
CORROSION ALLOWANCE	3.2 mm	3.2 mm	
INSULATION	NO	NO	
NO. OF PASSES	1	4	
PAINTING	2 COATS RUSTMASTER 585 OR E		
INSPECTION			
WEIGHT (KG)	EMPTY	FULL WATER	BUNDLE
	2200	2970	900

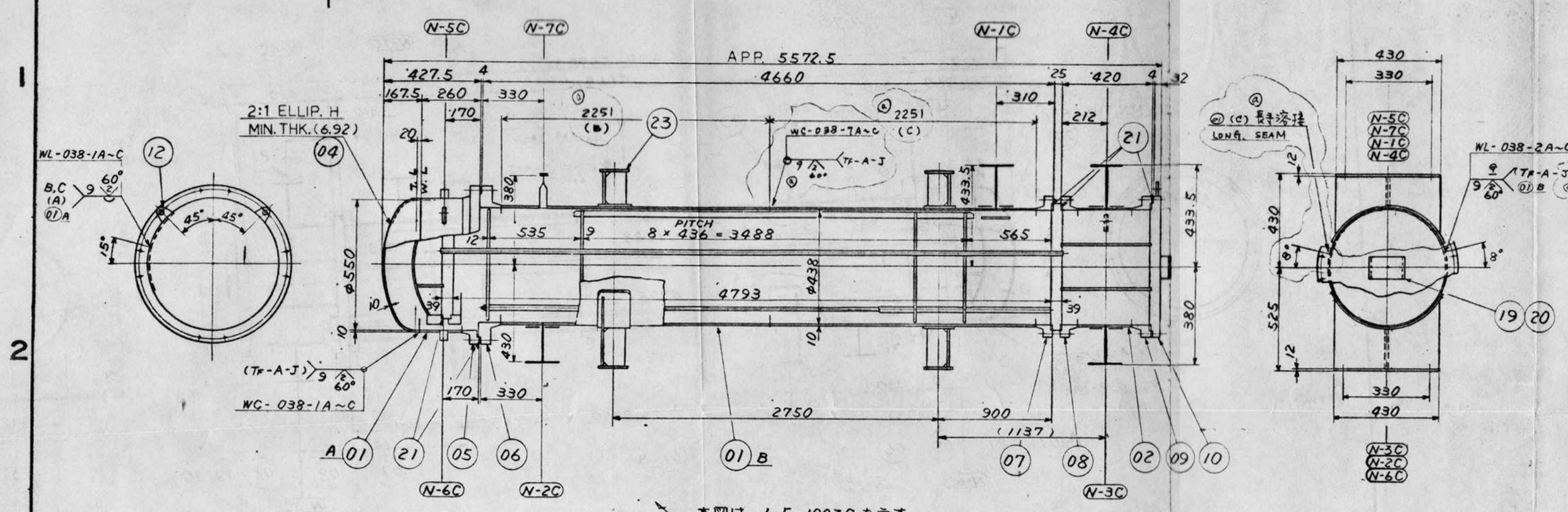
注記は HE01038 ²/₃ によること
REMARKS SHALL BE REFERRED TO DWG NO. HE01038 ²/₃

1	1	1	24	吊 手	LIFTING LUG	SS410	t12		
1	SET	1	SET	23	支持脚	SUPPORT SADDLE		HE01066	
1	SET	1	SET	22	テストリング	TEST RING		HE01122	国産です
1	SET	1	SET	21	ガスケット	GASKET		HE01094	
1	1	1	20	銘板記入用板	NAME PLATE SUPPORT	SS41	t4.5	HE01153	
1	1	1	19	銘板座	NAME PLATE SUPPORT	SS41	t4.5		
2	2	2	18	U/8×60- 押上ボルト	JACK BOLT	SS41		09-00887	
2	2	2	17	U/8×70- 押上ボルト	JACK BOLT	SS41		09-00887	
20×4	20×4	20×4	16	U/9×160(4)- ボルト ナット	BOLT & NUT	A93B7 A94-2H X		09-00888	+4: SPARE
20×4	20×4	20×4	15	U/9×160(4)- ボルト ナット	BOLT & NUT	A93B7 A94-2H X		09-00888	+4: SPARE
24×5	24×5	24×5	14	U/9×150(4)- ボルト ナット	BOLT & NUT	A93B7 A94-2H X		09-00888	+5: SPARE
2	2	2	13	吊 手	LIFTING LUG	SS410	t12		
2	2	2	12	吊 手	LIFTING LUG	SS410	t12		
2	2	2	11	仕切板	PASS PARTITION PLATE	AS15-60	t10		
1	1	1	10	蓋	COVER	A105	㊦		
1	1	1	09	フランジ	FLANGE	A105	㊦		
1	1	1	08				㊦		
1	1	1	07				㊦		
1	1	1	06				㊦		
1	1	1	05	フランジ	FLANGE	A105	㊦		
1	1	1	04	鏡板	HEAD	AS15-60 X	t10		
1	1	1	02	水室	CHANNEL	AS15-60 X	t10		
②	各	各	各	01	B. 胴	SHELL	AS15-60 X	t10	
1	1	1	01	A 胴	SHELL	AS15-60 X	t10		
A	B	C	NO	N A M E		MATERIAL	SIZE	DWG NO	REMARKS
NO REQ'D								図面管理	

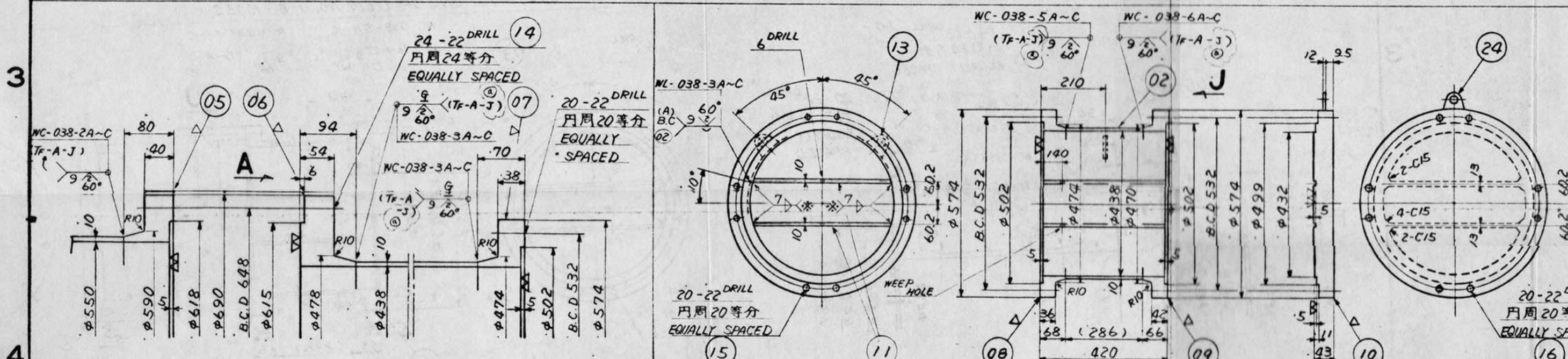
FACILITY	REFINERIA COCHABAMBA PARA BOLIVIA
PURCHASER	Y. P. F. B
CONTRACT NO.	AG - 85 / 86
P.O. NO.	CB - 031
B/M NO.	E - 104

AG MCKEE & CO		APPROVED BY <i>[Signature]</i>	
CHECKED BY <i>[Signature]</i>		DRAWN BY <i>[Signature]</i>	
DATE		DATE	
DWG NO		DWG NO	
HE01038		HE01038	
DATE		DATE	
OCT 7 '76		OCT 7 '76	

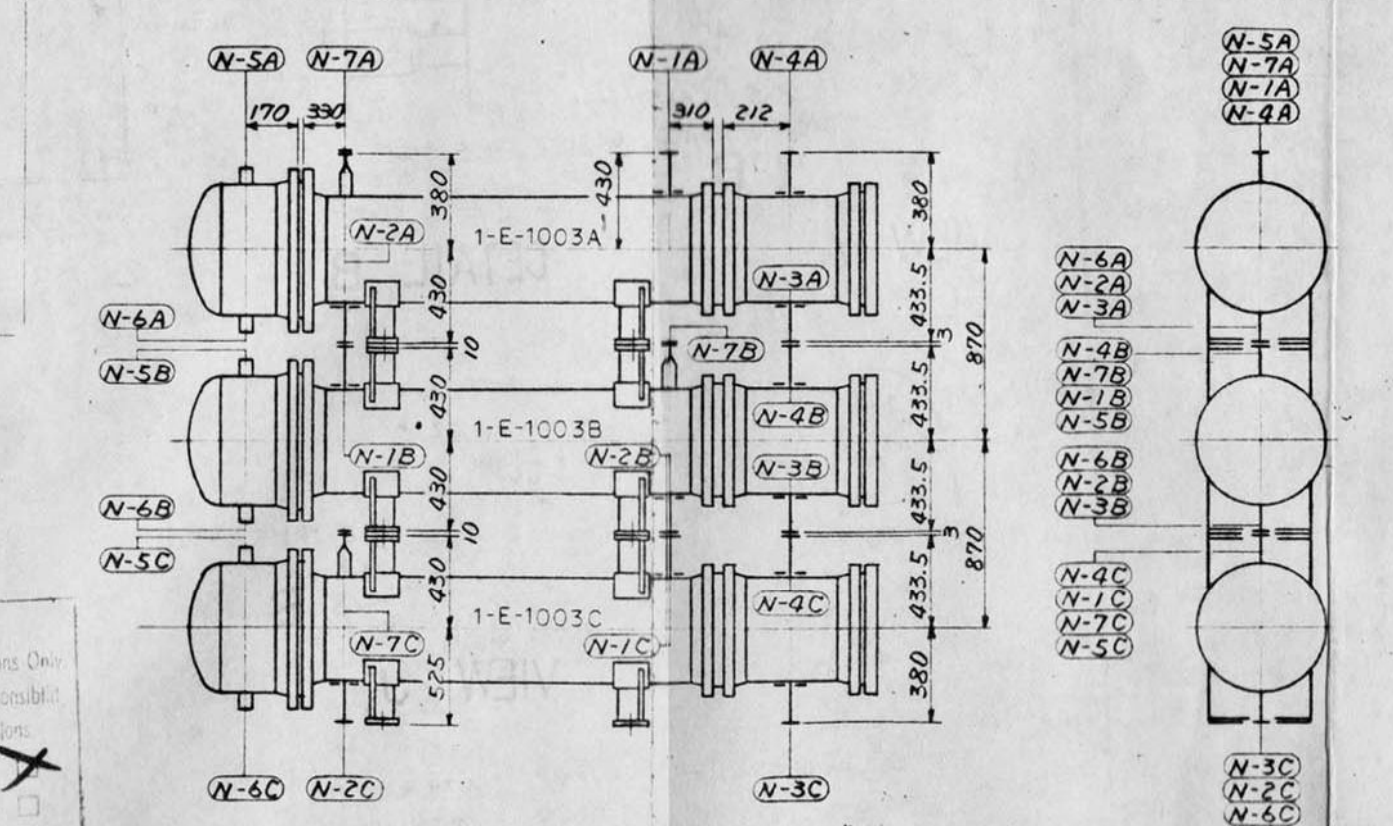
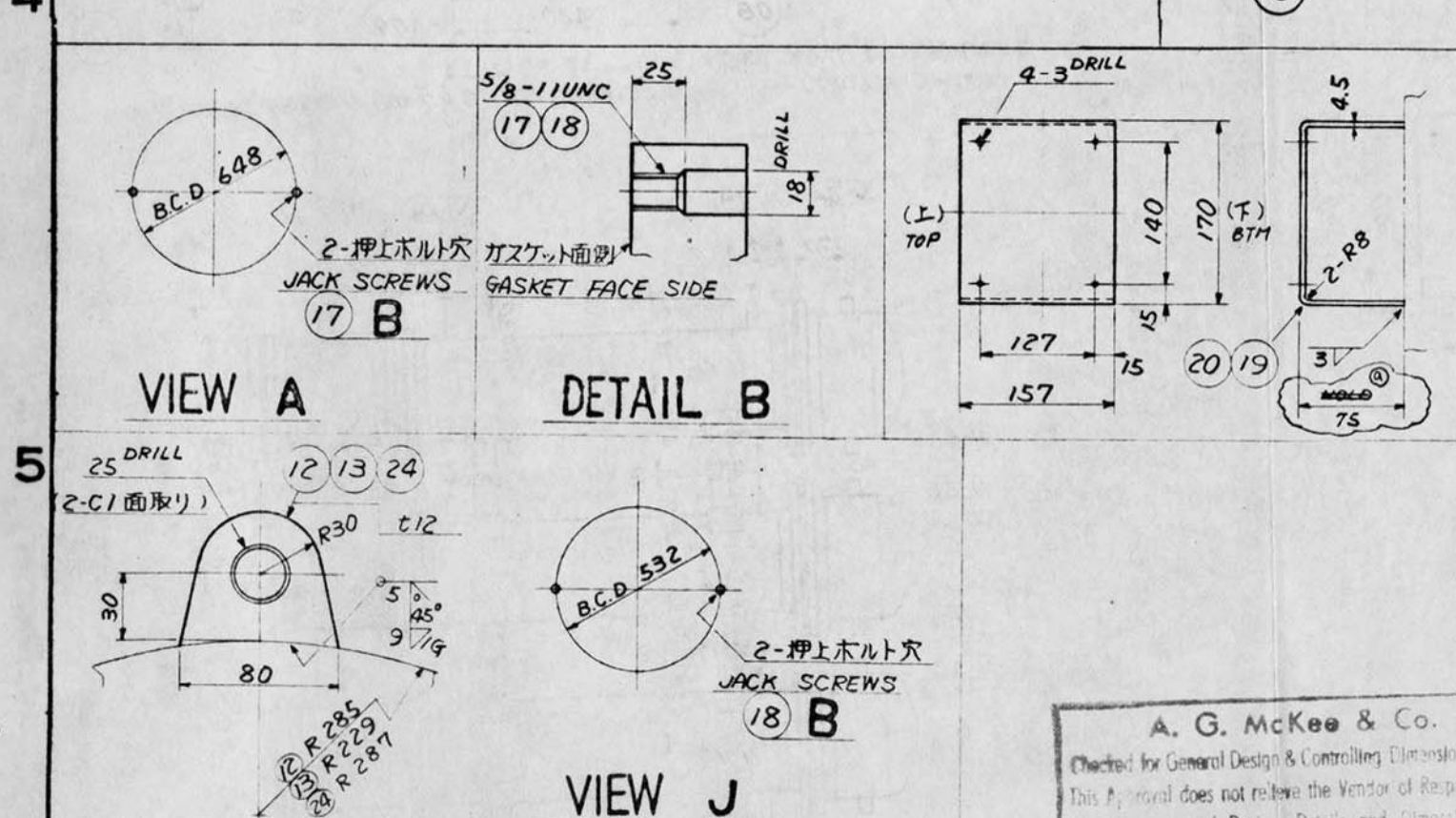
 MITSUBISHI HEAVY INDUSTRIES, LIMITED MIHARA MACHINERY WORKS, JAPAN



THIS D.W.G SHOWS CONSTRUCTIONS OF ITEM NO. 1-E-1003C



※ MARK WELDING PARTS TO BE FINISHED TO R7 UP TO 10 mm DEPTH FROM SEATING SURFACE



NOZZLE ASSEMBLY

N-7A-C	3	1 ^B	ANSI 150WN RF	VENT	WITH BLIND FLG
N-6A-C	3	NPT 3/4	#6000 COUPLING	DRAIN	WITH PLUG
N-5A-C	3	NPT 3/4	#6000 COUPLING	VENT	WITH PLUG
N-4A-C	3	3 ^B	ANSI 150WN RF	CHANNEL	OUT
N-3A-C	3	3 ^B		CHANNEL	IN
N-2A-C	3	8 ^B		SHELL	OUT
N-1A-C	3	8 ^B	ANSI 150WN RF	SHELL	IN
MARK	REQ'D	SIZE	RATING	SERVICE	REMARKS
NOZZLES & CONNECTIONS					

A. G. McKee & Co.
 Checked for General Design & Controlling Dimensions of
 This Approval does not relieve the Vendor of Responsibility
 for Correctness of Design, Details and Dimensions

1 - APPROVED ☒
 2 - APPROVED WITH COMMENTS ☐
 3 - APPROVED FOR ISSUE ☐

WELD PROCEED WITH FABRICATION

By AMP Date Jan. 10.77